

# 2023 ANNUAL REPORT

Ontario County SWCD  
480 North Main Street  
Canandaigua, NY 14424  
(585)396-1450  
[www.ontswcd.com](http://www.ontswcd.com)  
[info@ontswcd.com](mailto:info@ontswcd.com)

## Ontario County Soil & Water Conservation District Newsletter



### TABLE OF CONTENTS:

Manure Storage, Cover & Flare System Installed	1-2
2023 Achievements	3-4
Water and Sediment Control Basin	5
Soil Health Workshop: February 27	6
Embrace-A-Stream Challenge	7
4-Hour Course: April 18	7
Thank You to Rich Russell	8
Roadside Drainage and Stabilization Projects	8
Roadway and Roadside Drainage Workshop: May 8	9
Backyard Conservation Conversation	10
2024 Tree & Shrub Program: Orders Due March 4	11-12
Staff & Board	13
Sponsors	14-15

## Manure Storage, Cover & Flare System Installed

The Ontario County Soil & Water Conservation District used funding from Round 6 of the New York State Department of Agriculture and Markets' Climate Resilient Farming program to install a covered storage and methane flare project on one of Ontario County's progressive, large dairy farms.



The plastic liner for the storage facility is installed over a thick fabric layer.

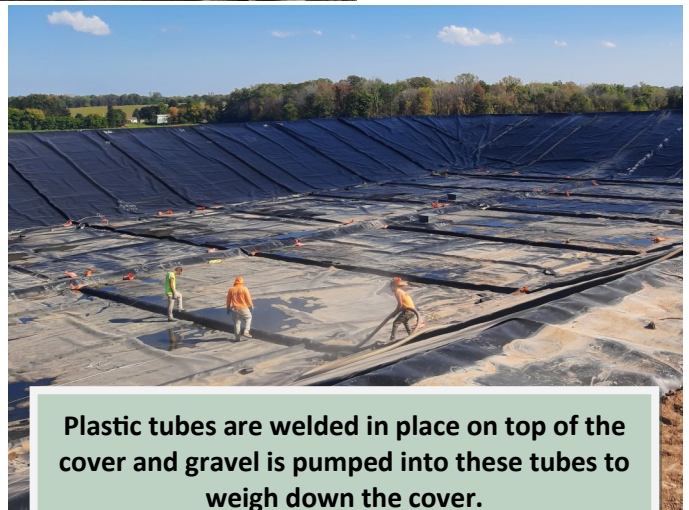
This covered storage and flare project is designed to work in tandem with an on-farm biogas digester system that processes and recycles renewable energy biogas back into the



These tubes will collect methane as it forms under the cover and pipe it to the flare. The cover is installed directly overtop the liner and methane collection tubes.

commercial natural gas pipeline system. The covered storage and flare system stores and processes over 3 million gallons of post digested manure at a time. The entire system will process up to 18 million gallons of manure per year.

The new cover and flare system is designed to function both with, and independent of, the digester system. The manure is



Plastic tubes are welded in place on top of the cover and gravel is pumped into these tubes to weigh down the cover.



# Cover & Flare System Continued...

**A concrete perimeter trench locks the liner and the cover in place.**



first processed through the methane digester where the biogas is captured and transported via the natural gas pipeline. Manure is then separated and the solids are recycled back into bedding. Post-processed waste, as well as waste which is in excess of what the digester can process, is stored in the new covered storage where the biogas is directed through the flare system. This new facility flares off all remaining fugitive

methane emissions, as well as continuing to burn off all additional methane emissions that form after the post processed manure has been sitting in storage.

**A concrete tank and dragline hookup valve provide access for pumping manure.**



This full system approach, with a double treatment of manure on the farm, allows for a 99% use and destruction rate of all methane produced in this waste stream. This project serves 2,400 animal units and recycles and/or destroys over 200,000 cubic feet of biogas per day. The flare system is integrated

into the facility-wide instrumentation and control system which automatically records operational conditions and quantifies production numbers allowing the flare to function at peak efficiency in both the cooler late fall and spring conditions as well as the warm summer months.

**Manure is directly pumped from the farm's separator system into the completed covered storage below. Notice the green digester in the background.**



This post processed manure can now be stored under cover until conditions are right to field apply, or until the manure is moved to a satellite facility. A buried 10" manure transfer line was installed as part of this project to take the

processed manure directly from this new storage, to adjacent farmland, as well as across the road, where it can be dragline applied to hundreds of acres of adjacent cropland. This takes up to 500 tanker truckloads of manure off of our roads each year.

**The completed flare system was fired up and burning methane immediately after being installed.**








**1**

**NEW STAFF  
MEMBER**



**63 RAIN  
BARRELS  
SOLD**



**APPLIED FOR:  
\$3.3 MILLION  
IN GRANT FUNDING**

**AWARDED TO DATE:  
\$2.2 MILLION**


*STAY TUNED FOR AWARD UPDATES!*



**COMPLETED  
\$1.2 MILLION  
IN GRANT FUNDED  
PROJECTS IN  
2023**



**2,100  
YARDS  
OF CONCRETE  
POURED**



**5 MILLION  
GALLONS  
OF MANURE  
STORAGE CREATED**



**8.8 MILLION  
GALLONS**

**OF WATER STORED  
ON AGRICULTURAL  
LANDS**



**1,500 ACRES  
OF COVER CROPS  
PLANTED**



**3,200  
TONS**

**OF SOIL SAVED  
FROM RUNOFF**



A photograph showing a roadside stabilization project with gravel and vegetation.

**1,380  
LINEAR FEET**

**OF ROADSIDE  
STABILIZATION  
INSTALLED**

A photograph of green grass.

**215**

**SEPTIC SYSTEM  
INSPECTIONS**

A dark background with a red apple icon in the bottom right corner.

**1,000**

**K-12 STUDENTS  
REACHED THROUGH  
OUR EDUCATION  
PROGRAM**

A photograph of a red barn and green field.

**377**

**AG LAND VALUE  
ASSESSMENTS  
COMPLETED**

A photograph of green trees.

**9,945**

**TREES &  
SHRUBS SOLD**

A photograph of a forest with a person in a yellow shirt.

**143**

**ACRES TREATED  
FOR HEMLOCK  
WOOLLY ADELGID**

A photograph of a road winding through a forest.

**25.4  
TONS**

**OF RESIDENTIAL  
TIRES RECYCLED**

A photograph of a construction site with cranes.

**81**

**SITE PLANS  
REVIEWED**

A photograph of dark soil.

**91**

**SOIL TESTS  
COMPLETED  
ON LOCAL  
FARMS**



# Finger Lakes Phosphorus Reduction Project

Before



Ontario County Soil & Water Conservation District (SWCD) recently used Great Lakes Commission Sediment and Nutrient Reduction Program (SNRP) funding, matched with Agricultural Environmental Management (AEM) technical time, to install a quarter acre farmable water and sediment control basin in the Town of Geneva.

Staff straw mulching the basin



This project was the first project completed in the Seneca Lake Watershed as part of our Finger Lakes Phosphorus Reduction Project. This project was installed to address a short run of severe gully erosion and has a sediment load reduction of 13 tons of soil saved per year.

The project is strategically installed on contoured headlands and all cropland acres remain in production.

After



If you are interested in learning more about soil health related topics and how to protect our local watersheds, make sure you register for our annual Soil Health Workshop which is on February 27, 2024 from 9:30am-3:00pm at the Benton Fire Hall in Penn Yan. This will be an excellent workshop with a variety of relevant agricultural topics. For the full agenda and registration information, see the next page of this newsletter for the flyer.





# Soil Health Workshop

Tuesday, February 27, 2024

9:30am-3:00pm



**Location:** Benton Fire Hall 932 State Route 14A, Penn Yan, NY 14527

## \*2 Pesticide Applicator Credits & 4 CCA CEUs\*

9:30-9:50	Registration and Refreshments
9:50-10:00	Welcome & Opening Remarks
10:00-11:00	<b>Keynote Speaker Eric Fuchs: Ag's Role in Non-Point Pollution</b> This talk delves into some problems Eric has encountered around the country with drinking water and agriculture and some of the challenges we face. It will touch on future regulatory issues, consumer sentiment and what the future holds for both these issues.
11:00-11:30	<b>Mike Stanyard, CCE Northwest NY Dairy, Livestock &amp; Field Crops: 2023 Corn &amp; Soybean Pest Management In-Review</b> Mike will look at the major pest management events in the NWNY region in corn and soybean for 2023. He will review issues covering insects, weeds and diseases and best management practices moving forward.
11:30-12:30	Lunch, Exhibitions, and Raffle Prizes
12:30-1:30	<b>Eric Fuchs: The 6 Principles of Soil Health</b> Eric will discuss the 6 principles of soil health and how by using these principles, we as producers are able to take ourselves down a more regenerative and economic path while working in the context of our operations.
1:30-2:30	<b>Kirsten Workman, Cornell Pro-Dairy: DEC Approved Manure Applicator Training</b> Required training for staff of CAFO's. Certificates of attendance will be issued. This training includes excellent information on using manure and is applicable for any farm using manure as a nutrient source on their farm.
2:30-3:00	<b>Local Farmer Panel</b> Discussion and questions led by Eric Fuchs; local farms will discuss agricultural conservation practices they are using.



**Eric Fuchs**

Eric Fuchs lives in Southeast Missouri on a diversified livestock operation where he raises hair sheep and contract grazes all classes of cattle. He has been using Holistic Planned Grazing for over eight years and has had a managed grazing system on his operation for more than 20 years.

Eric also works in the water and wastewater industry as a source water protection technician. He works with small and large communities and with agricultural producers to help ensure community water protection. Eric's journey into regenerative ag began on his own operation when he discovered how soil health focused practices could benefit water resources. He also realized that more regulation is never the answer but that the solutions for clean water are easily attainable by changing how we operate.

Graduating from the University of Missouri in 1994 with a degree in agronomy, Eric served in the U.S. Air Force for five years, during which time he received a master's degree in human resource development.

Erich is an educator for the Soil Health Academy, an organization co-founded by the late Dave Brandt, a pioneer in the soil health community. The Soil Health Academy team is a large team that includes soil health experts and farmers such as Gabe Brown.

To register, please return this form to: Canandaigua Lake Watershed Association, 144 Mill Street, Canandaigua, NY 14424, with check made payable to CLWA. You may also pre-register by calling 585-394-5030 or email [info@canandaigualakeassoc.org](mailto:info@canandaigualakeassoc.org) by **February 23, 2024**. To pay with credit card, please go to: [www.canandaigualakeassoc.org/2024-soil-health-workshop/](http://www.canandaigualakeassoc.org/2024-soil-health-workshop/)

**\$15** per participant with pre-registration (includes lunch).

**\$20** per participant for walk-ins (includes lunch; payable by cash only).

Name(s): \_\_\_\_\_

Address: \_\_\_\_\_

E-mail: \_\_\_\_\_

Number of Attendees: \_\_\_\_\_ Total Amount: \$ \_\_\_\_\_ Will you need a Manure Applicator Training Certificate? ☐ Yes ☐ No



## Embrace-A-Stream Challenge Results

The District is partnering on an aquatic connectivity project in the Town of Naples to enhance fish habitat and passage. Embrace-A-Stream is a matching grant program administered by Trout Unlimited (TU) that awards funds to TU chapters and councils for coldwater fisheries conservation. Every year, TU hosts a contest to support Embrace-A-Stream projects where donations can help boost project budgets, with prizes awarded for most money raised and most unique donations. Thanks to *unbelievable* community support, our project was #1 nationwide in both number of donations and amount of donations, out-competing much larger TU Chapters across the country. Not only did we raise additional funds through donations, but with the prize money we nearly doubled our award amount! Thank you to all in the community who donated and offered support to the program. It was great to see the love for Naples Creek and how much it means to the fishing community across generations.



## Upcoming 4-Hour Erosion & Sediment Control Training

Upcoming NYS DEC 4-Hour Erosion & Sediment Control Training:  
**Thursday, April 18, 2024 from 8am-12pm**

[Click here for more information.](#)

The Ontario County SWCD is holding a New York State Department of Environmental Conservation (NYS DEC) Endorsed 4 Hour Erosion and Sediment Control Required Training on April 18, 2024. The course will cost \$100 and pre-registration is required by April 16, 2024. The class is filled on a first come, first serve basis. Please contact the Ontario County SWCD at (585)396-1450 or email [info@ontswcd.com](mailto:info@ontswcd.com) for more information. Under the NYS DEC's Stormwater Permit GP-0-20-001, all developers, contractors and subcontractors must identify at least one trained individual from their company that will be responsible for implementation of the SWPPP, and have at least one trained individual on site on a daily basis when soil disturbance activities are being performed. Also, developers must have a qualified inspector conduct regular site inspections in accordance with the General Permit. This training is good for 3 years.





## Thank You to Rich Russell

Appointed to the Ontario County Soil & Water Conservation District Board as a Legislative Representative in 2010, Rich Russell has been an invaluable support to the District for the past 13 years. We are thankful for the dedication, knowledge, and experience that Rich brought to our organization. At our December Board meeting, a Resolution of Appreciation was awarded to Rich for his service. During his time with the Ontario County SWCD, Rich served on numerous committees, was instrumental in hiring new staff, coordinating personnel, providing fiscal oversight, and helping to steer the District toward continued success. We thank Rich for his generous commitment to the District and for serving Ontario County.



Board member Ken Livermore and District Manager Megan Webster present a Resolution of Appreciation to Rich Russell (center)

## Roadside Drainage and Stabilization Projects

Ontario County SWCD has a long history of working with municipal, county and state highway departments to implement roadside drainage projects and to support stabilization programs like hydroseeding, culvert replacement and the use of new and innovative technologies. Part of that work is sharing information and experiences with partners. A recent partnership with the Town of Canadice to install Flexamat material for roadside stabilization offered the opportunity to create a “how-to” video to share with other highway departments interested in the material. [Click here to check out the video.](#)



On May 8<sup>th</sup>, 2024, the District will be partnering with Cornell Local Roads Program to present the “Roadway and Roadside Drainage” workshop **free** of charge to local highway departments. These partnerships promote collaboration and help us all enjoy safe roadways and protect water quality. See the next page of this newsletter for the full flyer and registration information!



# New York State LTAP Center Cornell Local Roads Program

[nysltap.org](http://nysltap.org)

P: 607-255-8033

Email: [clrp@cornell.edu](mailto:clrp@cornell.edu)

## Roadway and Roadside Drainage Workshop

**When:** May 8, 2024 from 8:30am-3:00pm

**Where:** Ontario County Soil & Water Conservation District (SWCD)  
480 N Main St, Canandaigua, NY 14424

**Cost:** FREE *Sponsored by Ontario County SWCD*

To register, please go to: [nysltapclrp.regfox.com/2024-spring-workshop-season](https://nysltapclrp.regfox.com/2024-spring-workshop-season)

**Who should attend:** Crew leaders including foremen, equipment operators, superintendents of small highway departments, and others who want to gain knowledge of open drainage systems. The course is geared to practical day-to-day operations.

### Participants taking this course will be able to:

- Contrast the differences in soil behavior in the presence of water (gravel to clay)
- Explain how freezing and thawing changes the characteristics of soils under a pavement
- Choose good candidates for subsurface drains and select proper backfill for said drains
- Select the proper cross section to improve surface drainage off a highway
- Distinguish between reasonable use, common law, and civil law with regard to drainage of surface water
- Design a basic culvert installation and assess when to get help with the design
- Analyze a culvert's maintenance needs
- Differentiate between scraping and cleaning a ditch
- Select the lining / covering for a ditch or slope to reduce erosion while still performing its function

### Instructor:

David P. Orr, P.E., is the Director for the NYSLTAP - Cornell Local Roads Program. Formerly the Deputy Highway Superintendent for Yates County, David has nearly 40 years of road-related experience.

As part of Cornell Cooperative Extension and a national network of LTAP centers, the NYSLTAP Center - Cornell Local Roads Program provides training and assistance to local transportation agencies and affiliates across New York State.



**ONTARIO COUNTY**  
SOIL & WATER CONSERVATION DISTRICT



**Department of  
Transportation**

**Local Technical  
Assistance Program**







# Backyard Conservation Conversation



## Where are the Winter Birds?

Wondering where our common winter birds have gone? Ask Canada. Generally, if the weather up north is mild, we will find less of the usual suspects that come to our feeders during this time of year. How many different winter species have you spotted this season? Most likely you have seen the adorable junco, the eloquent white-throated sparrow, the rustic tree sparrow and the dapper pine siskin. A few snowy migrants that you may have missed could include the cute redpoll, the fabulous evening grosbeak, the giant flocks of snow buntings, the horned lark (commonly spotted along roadways) and the elusive crossbill.

You should know that what you offer at your feeders does influence what species you can attract. Black-oil sunflower is the all around most bang for your buck seed for sure. However, not all species consider that as their main course meal. Many of these winter inhabitants are small seed eaters and go wild for white millet and medium cracked corn. These long-distance travelers make it easy on us as they prefer to feed almost exclusively on the ground. Therefore, an actual bird feeder can be unnecessary. Just throw these seeds directly on the ground below or near some cover. If you are looking for native trees or shrubs that help out wildlife, including our backyard bird species, check out the next two pages for our annual tree and shrub sale order form.

Doing good things to help out a few winter birds is easy and fun. Getting to see some unusual feathered friends in the slower and colder time of year is the reward. Remember to clean your feeders regularly as to not spread disease. Also, starting a bird feeder is a commitment; keep bird feed on hand as to not disappoint your regular visitors. So, get yourself some good quality feed and keep your eyes open for some cool visitors!

Dark-eyed junco



February is National Bird Feeding Month!!



White millet and cracked corn bird seed mix





# 2024 TREE & SHRUB PROGRAM

**ONTARIO COUNTY SOIL & WATER CONSERVATION DISTRICT**  
**480 NORTH MAIN STREET, CANANDAIGUA, NY 14424 (585)396-1450**  
**WWW.ONTSWCD.COM**

Trees and shrubs must be ordered in quantities listed or in multiples of those listed. Call for quantities over 300.

## ALL SPECIES IN LIMITED QUANTITIES

### Pricing

10/\$15 of same species  
 25/\$35 of same species  
 100/\$130 of same species

### CONIFEROUS TREES

Species & Size	Quantity	Cost
American Larch 6-18"		
Colorado Blue Spruce 9-15"		
Douglas Fir 9-15"		
White Pine 6-12"		
White Spruce 9-15"		

### Pricing

10/\$15 of same species  
 25/\$35 of same species  
 100/\$130 of same species

### DECIDUOUS TREES & SHRUBS

Species & Size	Quantity	Cost
Buttonbush 10-18"		
Eastern Redbud 12-18"		
Elderberry 12-18"		
River Birch 12-18"		
Serviceberry 18-24"		
Swamp White Oak 12-18"		
Sycamore 12-18"		
Tulip Tree 12-18"		
White Birch 12-18"		

### PACKETS (Prices Vary)

	Quantity	Cost
Edible Fruit (2 each – Blackberry, Blueberry-Jersey, Blueberry-Blueray, Raspberry, Strawberry)	\$30	
Evergreen (2 each – Balsam Fir, Colorado Blue Spruce, Fraser Fir, White Pine, White Spruce)	\$30	
Flowering (2 each – American Cranberry, Lilac, Ninebark, Redbud, White Flowering Dogwood)	\$25	
Native NY Wildlife (2 each – American Hazelnut, Black Cherry, Red Osier Dogwood, Serviceberry, White Pine)	\$25	
Nut Tree (2 each – Burr Oak, Pin Oak, Red Oak, Sawtooth Oak, White Oak)	\$25	
Pond Habitat (2 each – Buttonbush, Red Osier Dogwood, River Birch, Sycamore, Willow)	\$25	

### SUPPLIES (Tax Included)

	Quantity	Cost
Fluorescent Pink Marking Flags	10/\$5, 100/\$20	

**GRAND TOTAL \$** \_\_\_\_\_

All species are bare rootstock. Species subject to change without notice. The District reserves the right to refund payment for species if unavailable. The District will NOT be responsible for the success or failure of plantings.

Orders with payment must be placed by **March 4, 2024**

Enclose check payable to **Ontario County SWCD**

#### PICK-UP TIMES/DATES:

8:00 am to 4:00 pm, **FRIDAY, APRIL 19, 2024**

8:00 am to 11:00 am, **SATURDAY, APRIL 20, 2024**

#### PICK-UP LOCATION:

**Ontario County Fairgrounds**

**2820 County Road 10**

**Canandaigua, NY 14424**

#### Actual Mailing Address (Residency Not Required)

NAME: \_\_\_\_\_

ADDRESS: \_\_\_\_\_

PHONE: ( \_\_\_\_\_ ) \_\_\_\_\_

EMAIL: \_\_\_\_\_

In compliance with New York State Sales and Use Tax Regulations, 20 NYCRR, Section 529.2(c) – All trees and shrubs are to be used for effective conservation practices such as windbreaks, soil erosion control, etc. and will not be planted for ornamental purposes. Trees and shrubs sold will not be removed with roots attached for resale.



# 2024 TREE & SHRUB DESCRIPTIONS

**AMERICAN CRANBERRY** – *Viburnum trilobum* When mature, an 8-12' multi-stemmed shrub with clusters of white flowers in May. Bright red fruit attracts birds September-February. A good specimen for a wetland planting, screen or for wildlife.

**AMERICAN HAZELNUT** – *Corylus americana* The American Hazelnut is a multi-stemmed shrub with a rounded top and an open, often wide-spreading base. Grows to maximum height of 15-18' and a spread of 10-12' at maturity. It bears, in 2-3 years, an abundant crop of small, sweet tasting nuts. The nuts are easy to crack and drop free of the husk when mature. Excellent wildlife food source.

**AMERICAN LARCH** – *Larix laricina* Medium-sized coniferous tree. Intolerant of shade, and found mostly in swamps and other wet areas. Although it is a conifer, it is not an evergreen. Larches have short needles that are produced in whorls. The needles turn brilliantly yellow in the late autumn and fall from the tree, which makes them a deciduous conifer.

**BALSAM FIR** – *Abies balsamea* One of the more important conifers in the northern United States. Small to medium-sized, steeple-shaped tree with upright cones. Wildlife food and shelter source.

**BLACK CHERRY** – *Prunus serotina* Grows up to 50' tall. Pendulous branched tree with profuse white flowers in spring with good fall color. Mature trunk has 'burnt potato-chip' bark exposing reddish underbark. The fruits are usually devoured by birds/wildlife. Grows best in rich, moist, well-drained soil/full sun.

**BURR OAK** – *Quercus macrocarpa* Large distinguished oak with deeply furrowed bark and leathery lobed leaves resembling a bass fiddle. Acorn is easily identifiable by unique 'mossy' feathery sheath. Tolerant of a variety of moisture and soil conditions. Adapts well to urban settings. Native that prefers full sun. Grows 70-80'.

**BUTTONBUSH** – *Cephalanthus occidentalis* Deciduous shrub with an open-rounded habit that grows 6-12' tall. Easily grown in moist, humusy soils in full sun to part shade. Grows very well in wet soils, including flood conditions and shallow standing water. Flower heads are very attractive to bees and butterflies.

**COLORADO BLUE SPRUCE** – *Picea pungens* Grows up to 100'. Will reach 6' in 8-9 years, starting with a 3-year seedling. Its stiff, silvery-blue to bluish-green needles are 1" long. A handsome tree in a single planting or as a dense colorful screen or windbreak spaced 6' apart. Well-drained soil with good moisture and full sun.

**DOUGLAS FIR** – *Pseudotsuga menziesii* A popular tree reaching 6' in 9-10 years, starting with a 3-year seedling. Short, flat, soft blue-green needles. Grows fast in moist, well-drained soils. Full sun. Majestic evergreen.

**EASTERN REDBUD** – *Cercis canadensis* A small, irregular shaped, deciduous tree, strikingly conspicuous in the spring as the pink to reddish purple flowers form before the leaves. Grows on a variety of sites, best on moist, well-drained soils. Flat, small reddish-brown fruit pods persist throughout winter unless eaten by wild birds or other animals.

**ELDERBERRY** – *Sambucus canadensis* 5-12' multi-stemmed shrub. In mid June it has white flowers and in mid-August it has purple fruit when ripe, eaten by many species of birds. Elderberry tolerates most soils and roadside conditions.

**FRASER FIR** – *Abies fraseri* Shiny, green foliage is lighter on the underside. Has a delightful fragrance and attractive purplish cones. A great specimen that does require good drainage.

**NINEBARK** – *Physocarpus opulifolius* 5-9' deciduous shrub with showy white flowers in May-June and red fruit in mid-September. Very distinctive peeling bark. Tolerates most soils and full sun.

**PIN OAK** – *Quercus palustris* Fast growing (for an oak) native, 75' tall, 40' wide, pyramidal shaped with resilient branches that can withstand high winds and ice storms. Red leaves in fall and held into winter. Small acorns are excellent wildlife food source for deer, squirrel, turkey and wild birds. Full sun and a wide range of soil types including wet soils.

**RED OAK** – *Quercus rubra* A large symmetrical tree, 60-70'. Acorn cup is flat and saucer-like. Tolerates full sun and polluted environments. Sandy soils.

**RED OSIER DOGWOOD** – *Cornus sericea* Very geographically widespread native shrub with unique deep red stems, creamy white spring flowers, white fruit and maroon fall leaves. Excellent for reestablishing moist sites and stabilizing eroding streambanks. Wildlife food source for numerous species.

**RIVER BIRCH** – *Betula nigra* Shaggy-barked tree with a medium to fast growth rate to reach a height of 40-80'. The exposed inner bark color ranges from gray to cinnamon to reddish brown.

**SAWTOOTH OAK** – *Quercus acutissima* Produces large acorns in 7-10 years. Fast growing but small tree with a wide crown. A good wildlife tree and shade tree. 40-60' in height.

**SERVICEBERRY** – *Amelanchier laevis* Large shrub, excellent native. Fancy white flowers in April, followed by fruit in July. Tolerates full sun/partial shade, harsh climates and alkaline soils. Good bird/wildlife food source and erosion control.

**SWAMP WHITE OAK** – *Quercus bicolor* Grows in rich, deep, moist to wet, poorly-drained, acidic soils in full sun. A broad, rounded crown and a short trunk typically to 50-60'. Acorns mature in early fall. Best along streams, ponds, valleys, floodplains and the edge of wetlands. Good drought resistance. Usually has crimson shades of fall color.

**SYCAMORE** – *Platanus occidentalis* Very fast growing hardwood that is long lived and reaches 100-140' in height. Best on creek bottoms or low slopes. Good on most sites except swamps or dry sand hills. Requires direct sunlight.

**TULIP TREE** – *Liriodendron tulipifera* A tall, straight, 70-90' fast growing tree with unique notched-tip, four pointed leaves. Flowers May-June with greenish-yellow petals. Full sun, well-drained soil.

**WHITE BIRCH** – *Betula papyrifera* Grows up to 50' tall. Open green foliage. Grows best in cool, moist locations. Tolerates fairly wet locations (along water). Pendulous, graceful branches and snow-white bark. Bark turns white in 4-6 years. Plant 3-4 seedlings together to create clump effect.

**WHITE FLOWERING DOGWOOD** – *Cornus florida* Grows 20-30'. Beautiful leaf color in the fall and showy white flowers April-May. Red fruit through late December.

**WHITE OAK** – *Quercus alba* A tall, noble tree that grows well in most soil types. Acorns provide for an important and diverse wildlife food source. Important native.

**WHITE PINE** – *Pinus strobus* Grows up to 100' tall. Moderate growth with good needle retention. Soft, flexible, green needles in groups of 5. Grows best in moderately-well drained soils. Great for mixed windbreaks or screens.

**WHITE SPRUCE** – *Picea glauca* Grows up to 90' tall reaching 6' in 7-8 years beginning with a 3-year seedling. Its stiff needles are light bluish-green, usually 1" long. Thrives in full sun and well-drained soil. Extremely hardy and will live where other varieties will not.





# ONTARIO COUNTY

SOIL & WATER CONSERVATION DISTRICT

[www.ontswcd.com](http://www.ontswcd.com)

480 North Main Street, Canandaigua, New York 14424

Telephone (585) 396-1450 Fax (585) 396-1305

## Ontario County SWCD Staff:

District Manager: **Megan Webster**

Secretary-Treasurer to the Board: **Diana Thorn**

Senior Conservation District Technician: **Tucker Kautz**

Water Resource Technician: **Katie Lafler**

Conservation District Technician: **Tad Gerace**

Conservation District Technician: **Jenny May**

Conservation District Educator: **Alaina Robarge**

Canandaigua Lake Watershed Inspector: **Tyler Ohle**

Canandaigua Lake Watershed Administrative Assistant: **Jamie Noga**

## Board of Directors:

**Samuel Casella**, Chairman, Practical Farmer

**Jim Malyj**, Vice-Chairman, NYS Farm Bureau

**Kenneth Livermore**, NYS Grange

**Dale Stell**, Ontario County Supervisor

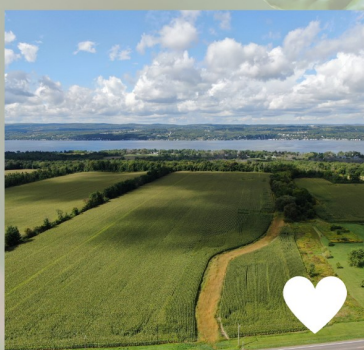
**Mark Venuti**, Ontario County Supervisor

**Edward Jackson**, Member At Large

**Amanda Amadon**, Practical Farmer



**MAKE SURE TO LIKE & FOLLOW US  
ON SOCIAL MEDIA**



FACEBOOK  
**@ONTARIOCOUNTYSWCD**

INSTAGRAM  
**@ONTARIOCOUNTYSWCD**





**THANK YOU to our newsletter sponsors for their support!**

# FARM DRAINAGE THAT NEVER TAKES THE DAY OFF.



Our GPS mapping, custom drainage plans, top-tier equipment, and 40+ years of expertise can work harder for your farmland today and for years to come. Let us prove it with a **complimentary site visit** this season.

Call **585.762.4411** to set up a time that works for you.



**ALLEGHANY  
SERVICES**

FARM DRAINAGE | CONSTRUCTION | DIRECTIONAL DRILLING

[ALLEGHANYSERVICES.COM](http://ALLEGHANYSERVICES.COM)

Over **675** ★★★★★ Reviews on facebook & Google!

## Your Local & Family Owned Septic & Sewer Experts

Barefoot Septic & Sewer Inc. has been serving Rochester and the surrounding areas since 1961. We offer year-round service and are prepared to respond quickly to all of your septic needs including:

- Pumping
- Installations
- Septic Inspections
- Repairs



**BAREFOOT**



**585.359.9330 | [barefootseptic.com](http://barefootseptic.com)**

**Barefoot Septic & Sewer, Inc.**



**THANK YOU to our newsletter sponsors for their support!**



**M**eadowview

**TREE FARM • NURSERY • LLC**

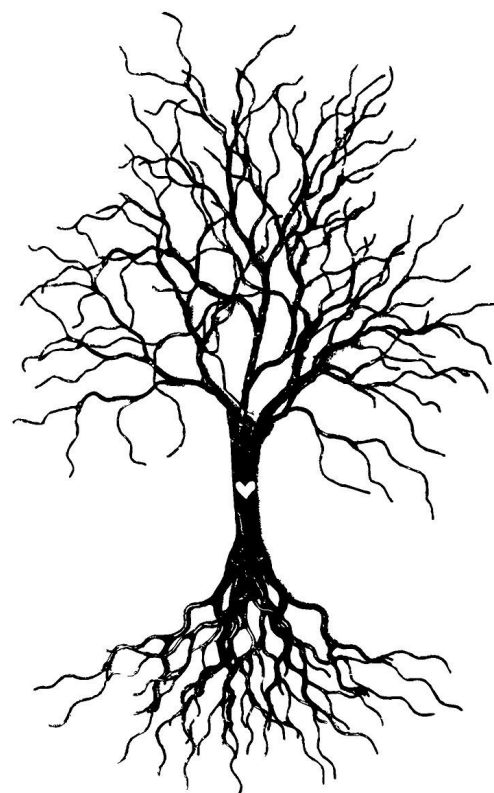
QUALITY PLANTS, LOCALLY GROWN SINCE 1983

**SEEDLINGS • TRANSPLANTS • INSTALLS**

**EXCAVATION • SITE WORK • SNOW REMOVAL**

NAPLES, NEW YORK

**585-694-8864**



*"PROMOTING TREE PLANTING IS AT THE HEART OF WHAT WE DO."*